



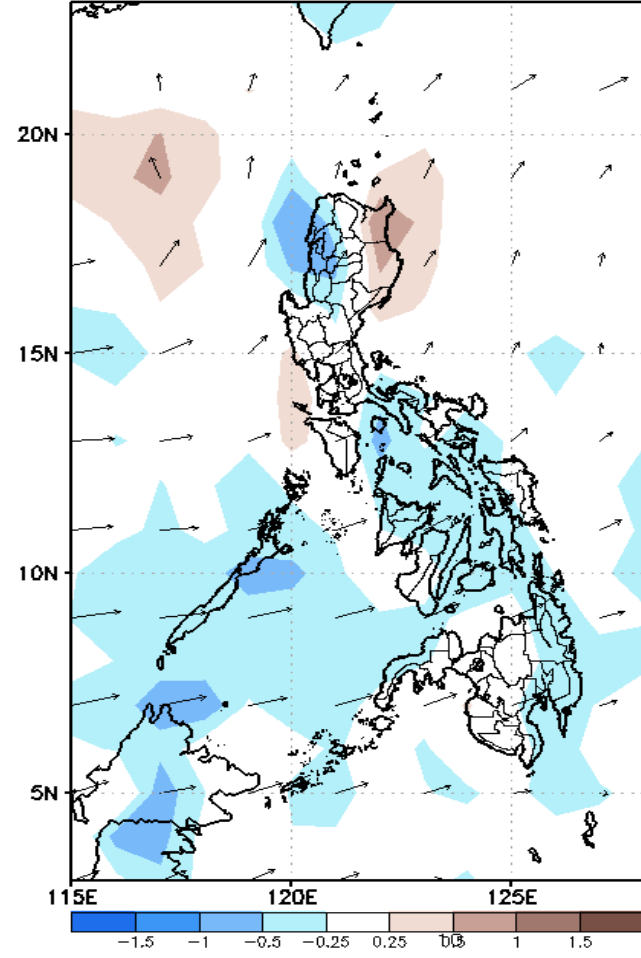
Week 1 & Week 2 Forecast for the Philippines using GEFS Model



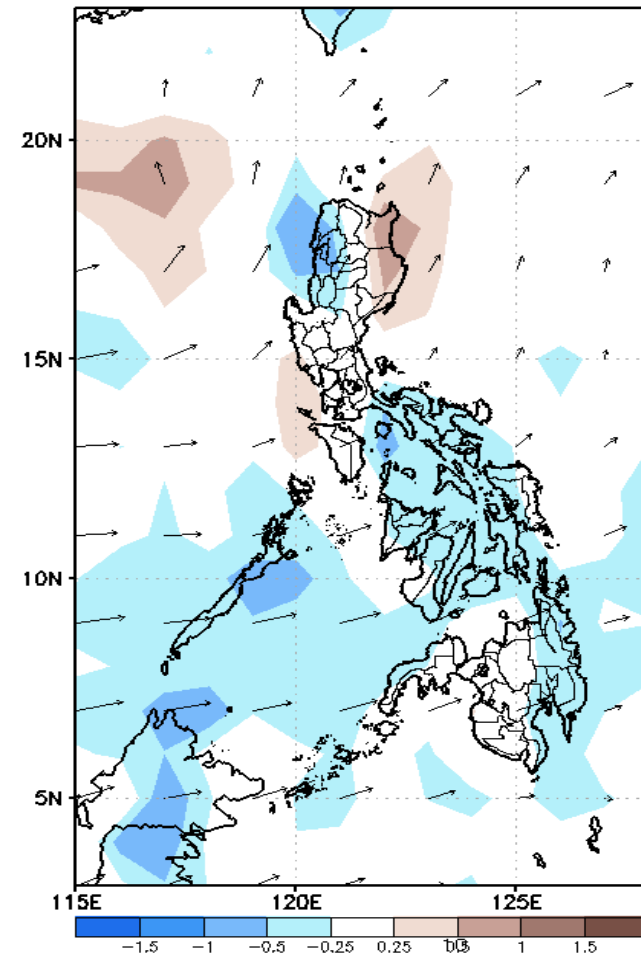
GEFS Week-1 Forecasts: Divergence & Wind Anomaly

Week 1: October 22-28, 2020

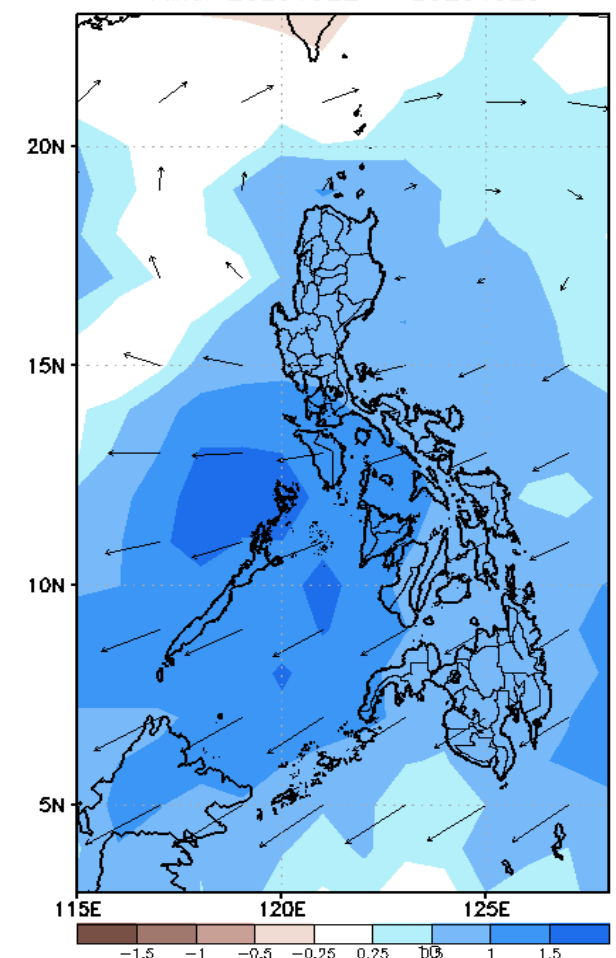
GEFS Week-1 850-hPa Divergence and Wind Anom: Valid: 20201022 - 20201028



GEFS Week-1 700-hPa Divergence and Wind Anom: Valid: 20201022 - 20201028



GEFS Week-1 200-hPa Divergence and Wind Anom: Valid: 20201022 - 20201028

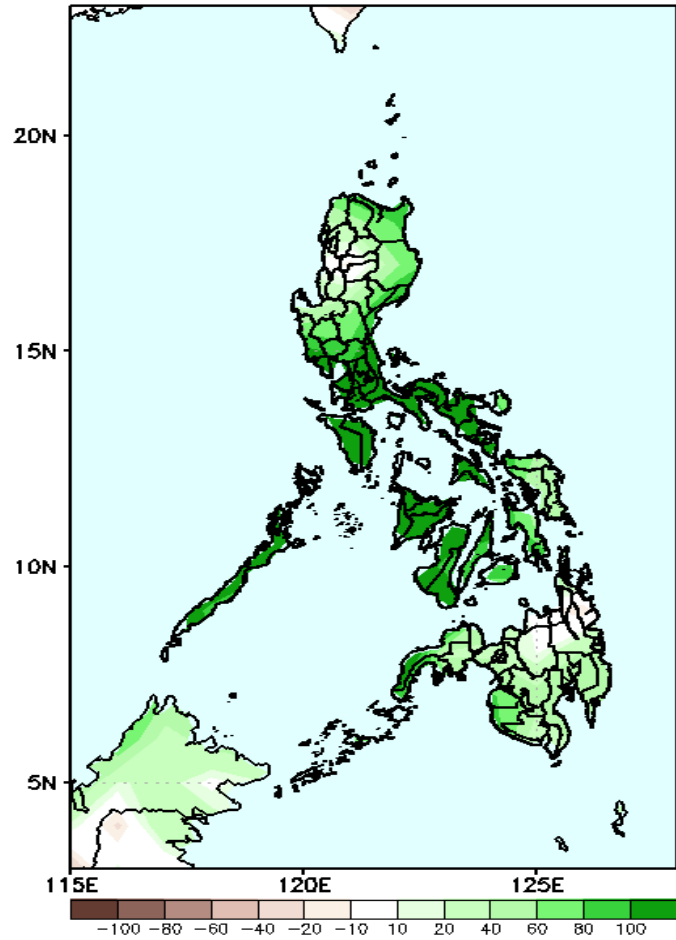


Upper level (200hPa) Divergence suggest likelihood of precipitation in most parts of the country during the forecast period. Westerly to southwesterly wind affecting most parts of the country while northeasterly windflow affecting extreme northern during the forecast period

Precipitation Anomaly and Exceedance Probability > 25/50 mm

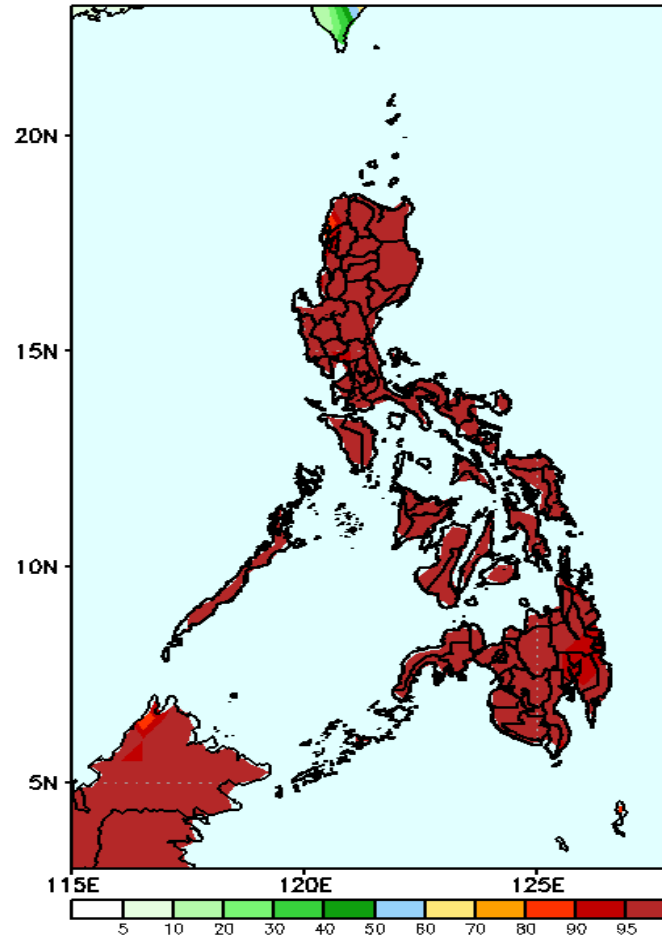
Week 1: October 22-28, 2020

GEFS Week-1 Precip Anomaly
Valid: 20201022 - 20201028



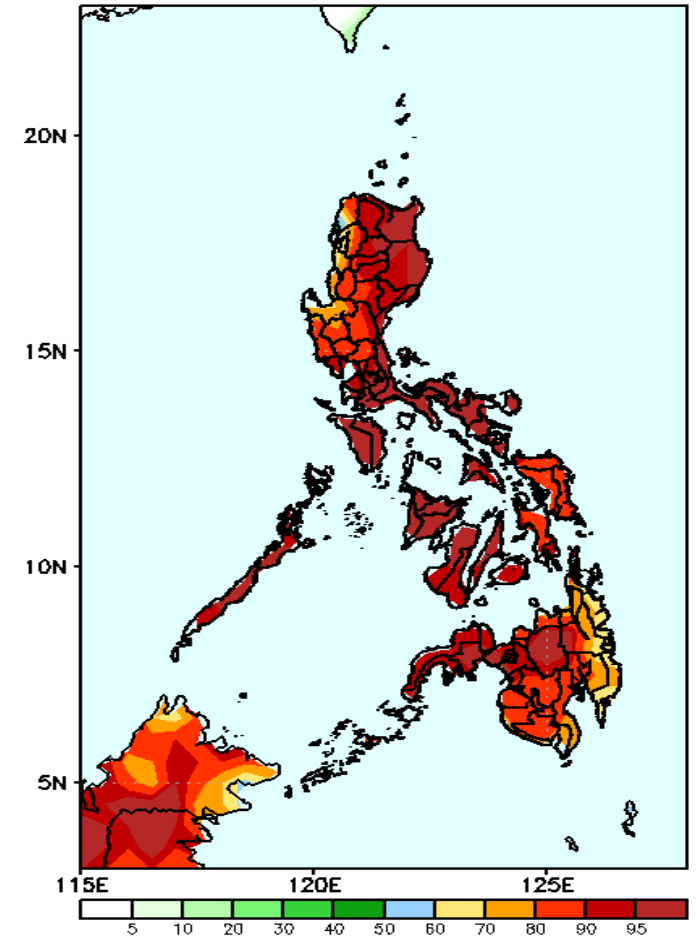
Increase of rainfall up to 100mm is expected in most parts of the during the forecast period.

GEFS Week-1 Exceedance Prob. > 25mm
Valid: 20201022 - 20201028



High probability of rainfall to exceed 25mm in most parts the country is expected during the forecast period.

GEFS Week-1 Exceedance Prob. > 50mm
Valid: 20201022 - 20201028

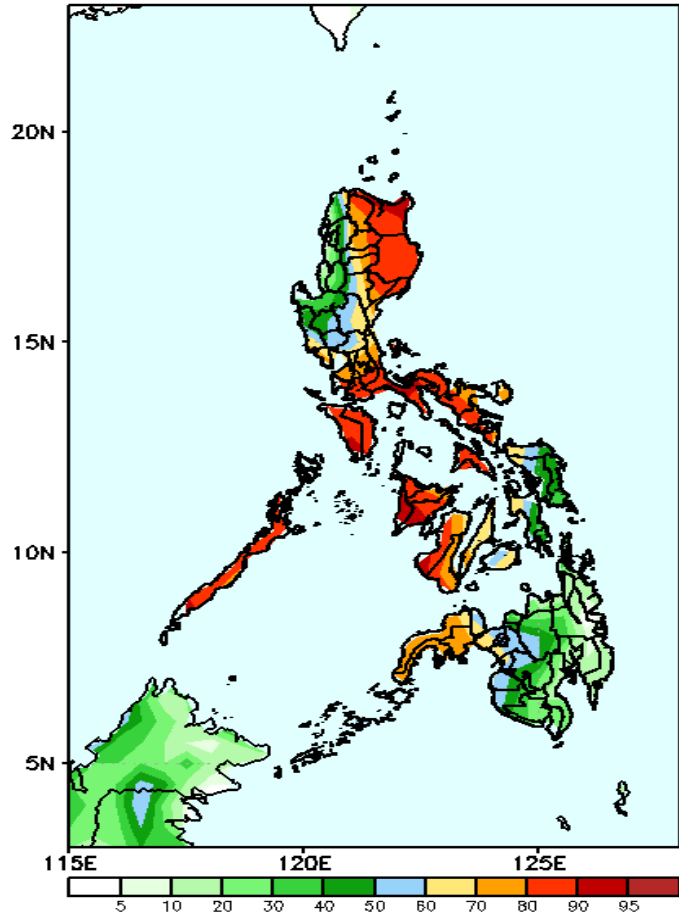


High probability of rainfall to exceed 50mm in most parts the country is expected during the forecast period.

Exceedance Probability > 100/150/200 mm

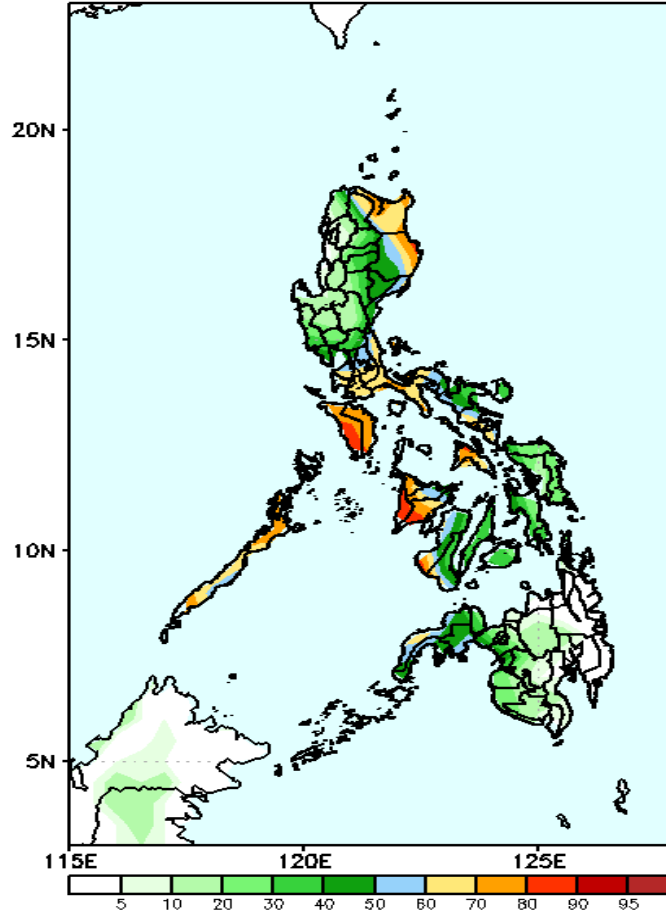
Week 1: October 22-28, 2020

GEFS Week-1 Exceedance Prob. > 100mm
Valid: 20201022 - 20201028



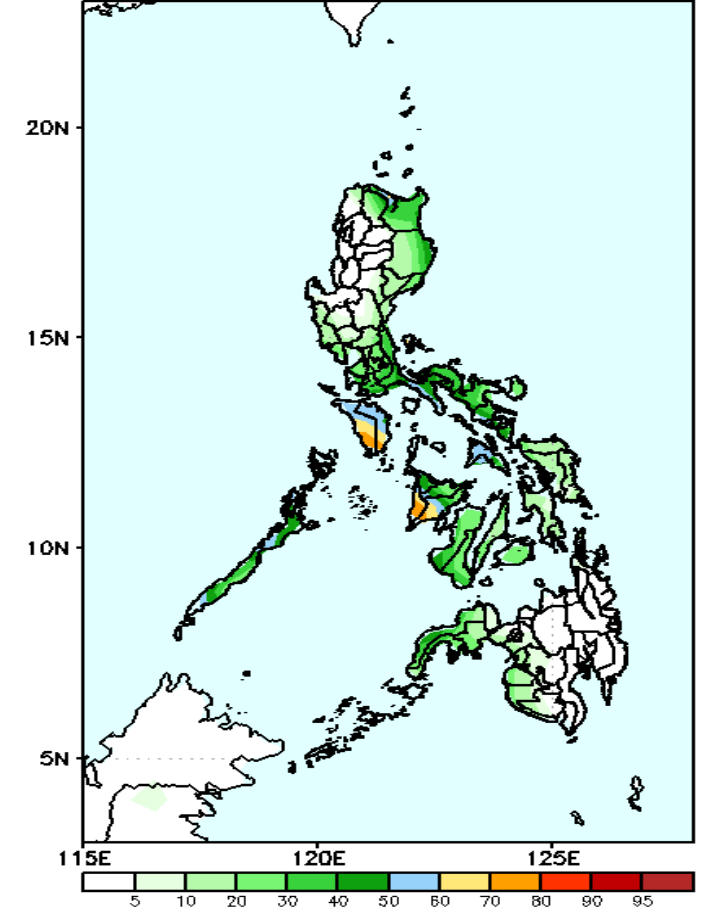
High probability of rainfall to exceed 100mm in most parts of Cagayan Valley & Cordillera Region, southern Luzon (including Mindoro and Palawan), Bicol Region, most parts of Visayas and Zamboanga Peninsula while less likely for the rest of the country during the forecast period.

GEFS Week-1 Exceedance Prob. > 150mm
Valid: 20201022 - 20201028



60-85% probability of rainfall to exceed 150mm in Cagayan and Isabela, Mindoro, Panay Island and Masbate while less likely for the rest of the country during the forecast period.

GEFS Week-1 Exceedance Prob. > 200mm
Valid: 20201022 - 20201028



50-80% probability of rainfall to exceed 200mm in Mindoro, Iloilo and Antique while less likely for the rest of the country during the forecast period.

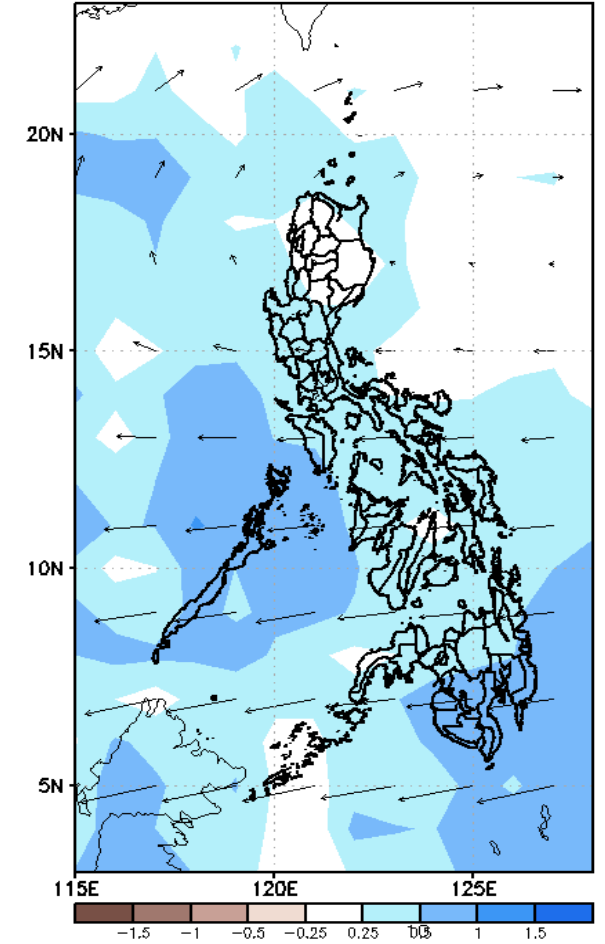
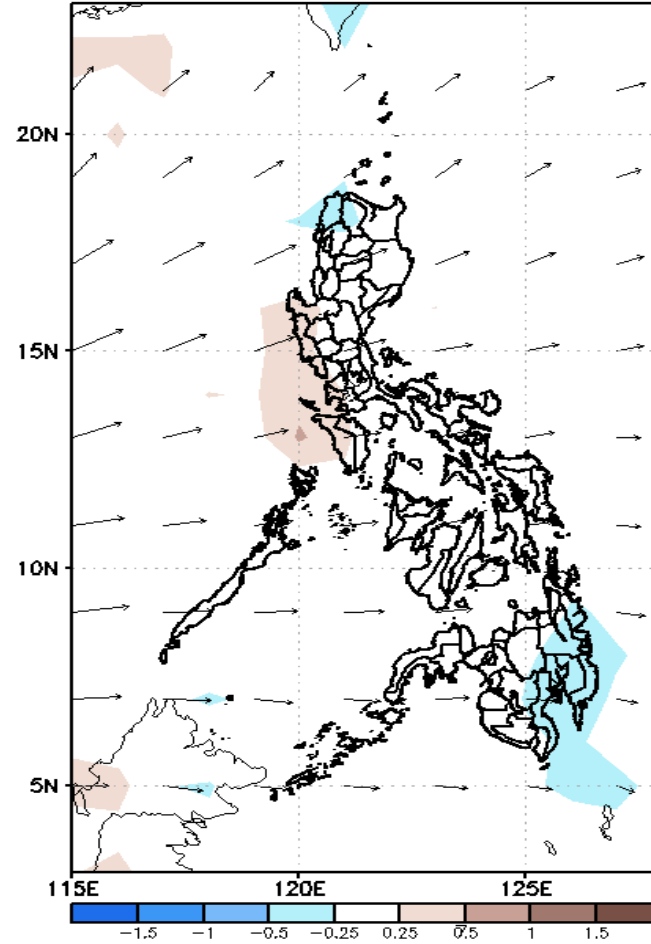
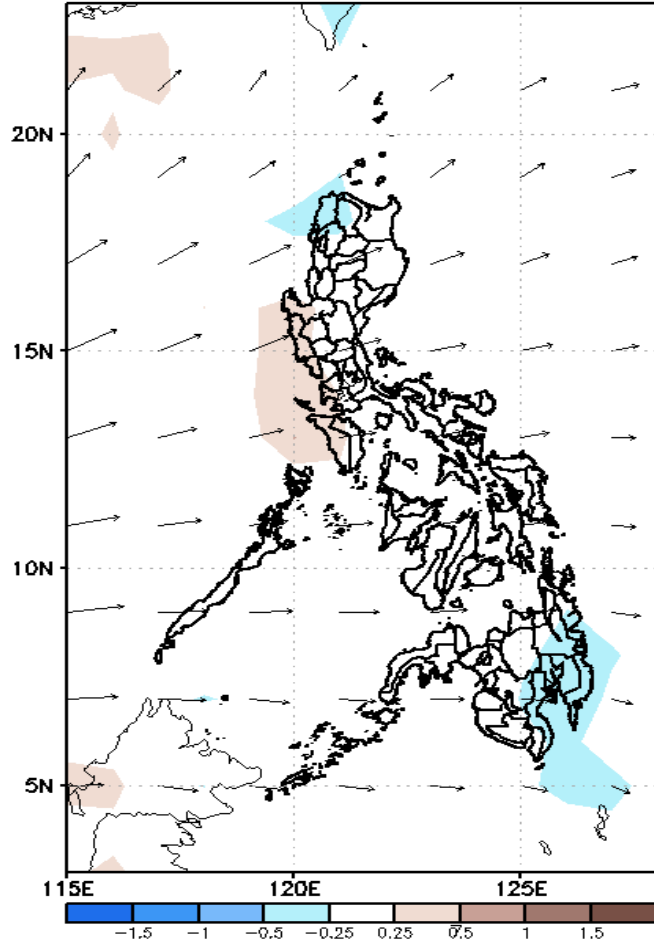
GEFS Week-2 Forecasts: Divergence & Wind Anomaly

Week 2: Oct 29-Nov 04, 2020

GEFS Week-2 850-hPa Divergence and Wind Anom: Valid: 20201029 - 20201104

GEFS Week-2 700-hPa Divergence and Wind Anom: Valid: 20201029 - 20201104

GEFS week-2 200-hPa Divergence and Wind Anom: Valid: 20201029 - 20201104

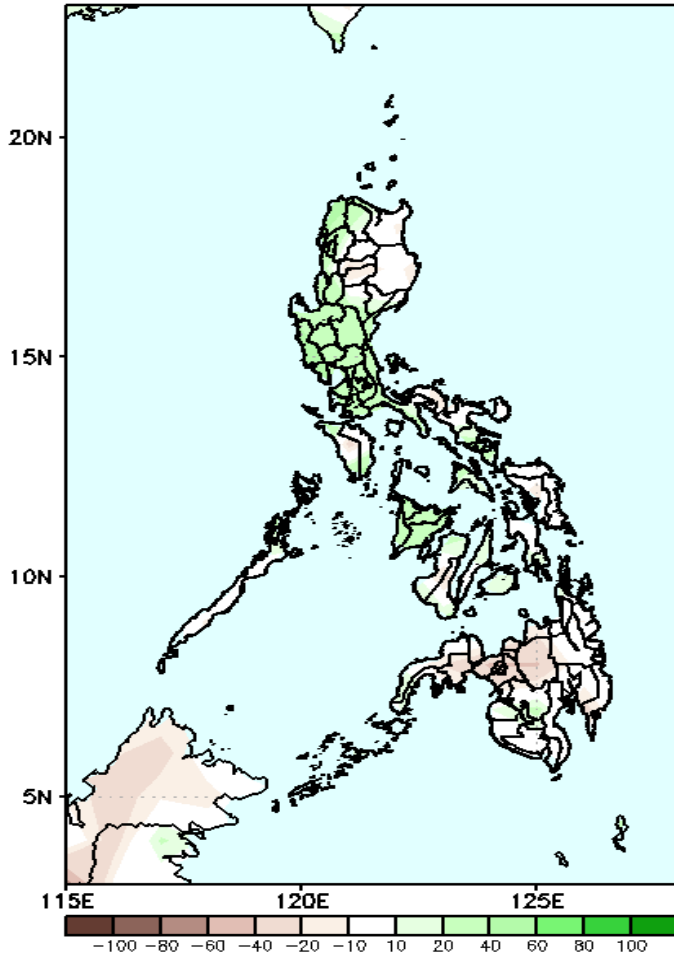


Upper level (200hPa) Divergence suggest likelihood of precipitation in most parts of the country except extreme northern Luzon during the forecast period. Westerly windflow affecting most parts of the country while northeasterly windflow affecting northern Luzon during the forecast period

Precipitation Anomaly and Exceedance Probability > 25/50 mm

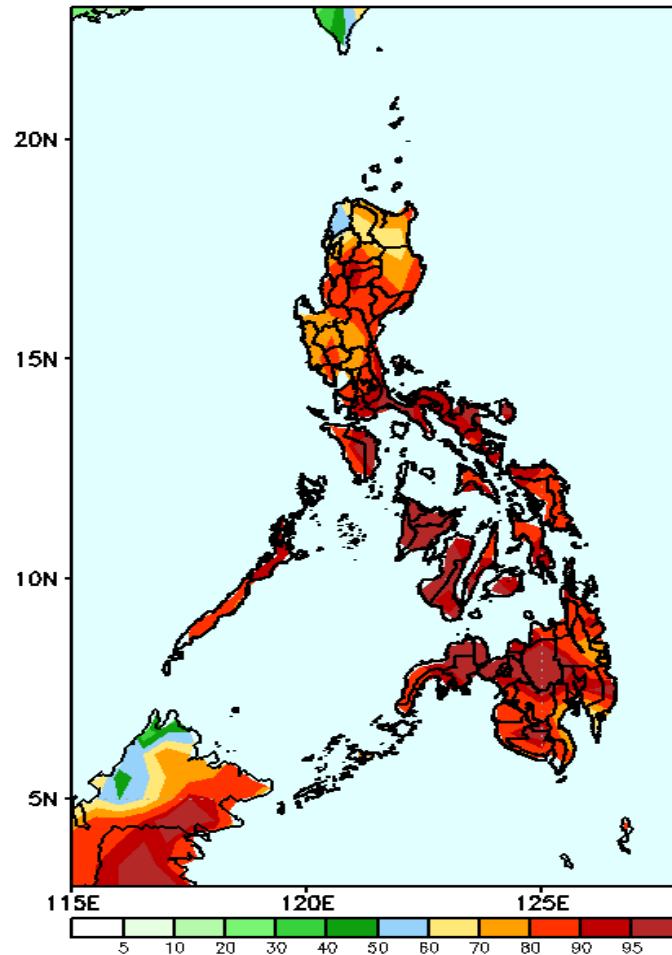
Week 2: Oct 29-Nov 04, 2020

GEFS Week-2 Precip Anomaly
Valid: 20201029 - 20201104



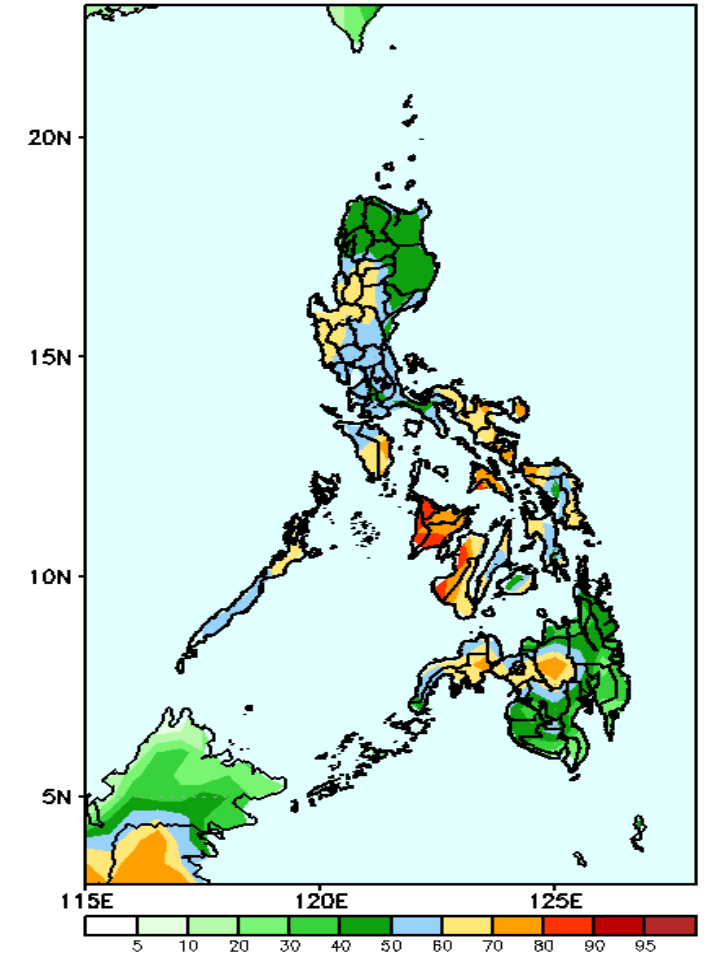
Increase of rainfall of 40-80mm in most parts of Luzon and Panay Island is expected during the forecast period.

GEFS Week-2 Exceedance Prob. > 25mm
Valid: 20201029 - 20201104



High probability of rainfall to exceed 25mm in most parts the country is expected during the forecast period.

GEFS Week-2 Exceedance Prob. > 50mm
Valid: 20201029 - 20201104

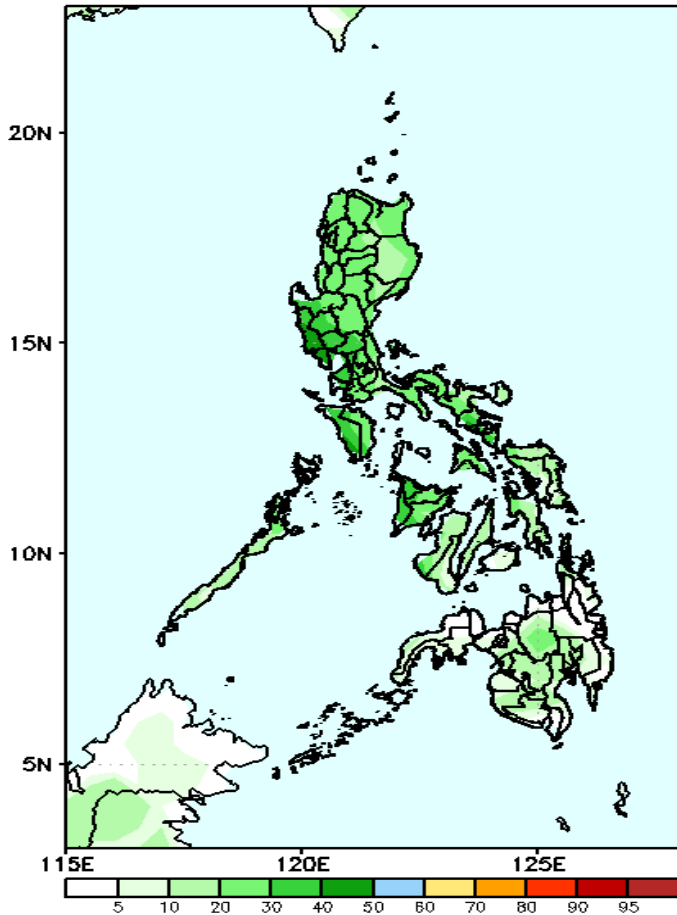


High probability of rainfall to exceed 50mm in Bicol Region and most parts of Visayas, Zamboanga del Sur and Bukidnon while 50-70% chance for the rest of the country during the forecast period.

Exceedance Probability > 100/150/200 mm

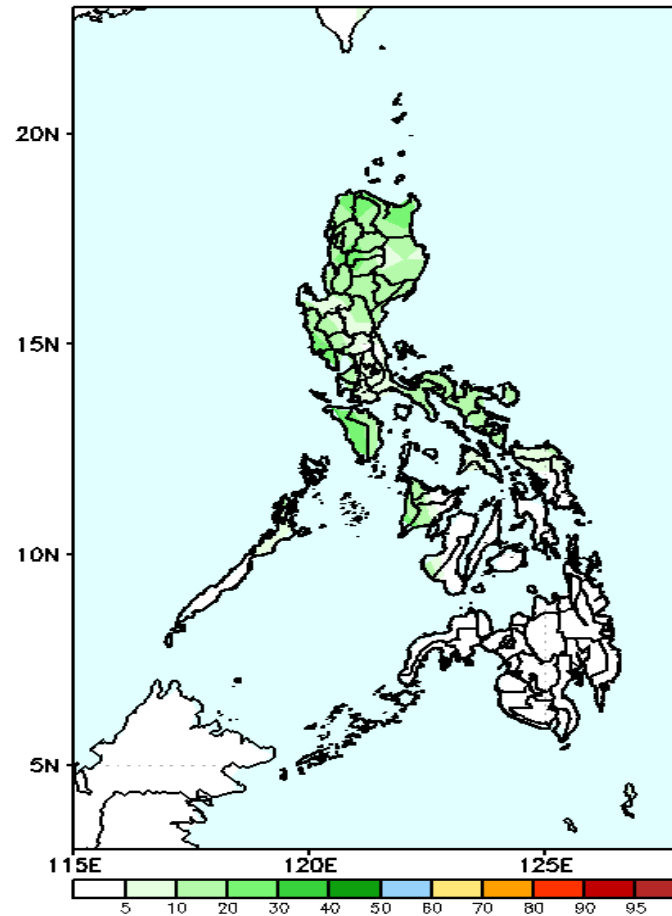
Week 2: Oct 29-Nov 04, 2020

GEFS Week-2 Exceedance Prob. > 100mm
Valid: 20201029 - 20201104



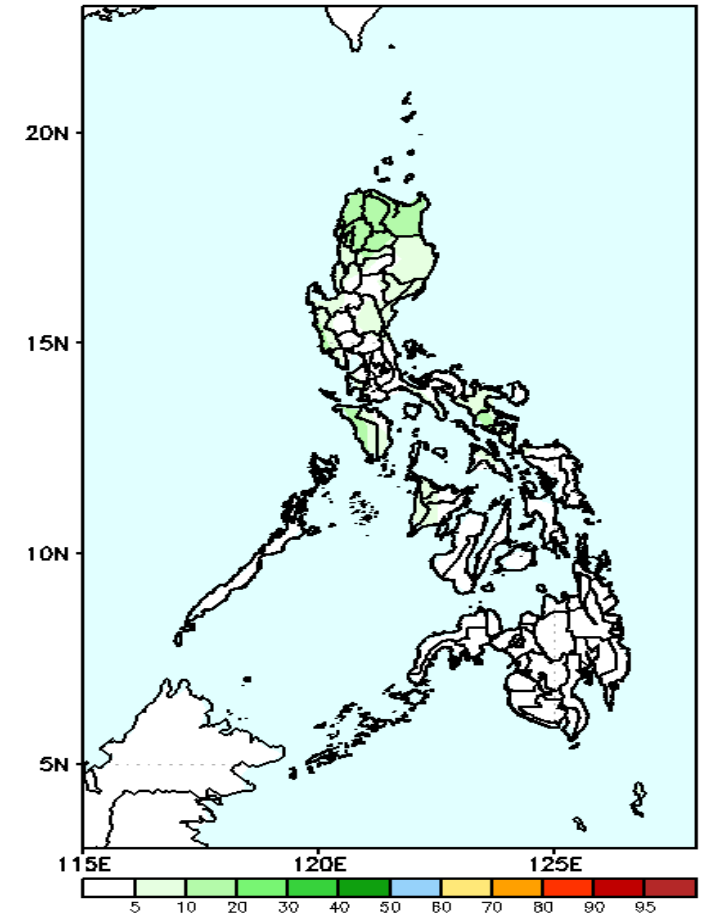
Less probability of rainfall to exceed 100mm in most parts of the country except in Cagayan where there is 50-80% probability during the forecast period.

GEFS Week-2 Exceedance Prob. > 150mm
Valid: 20201029 - 20201104



Less probability of rainfall to exceed 150mm in most parts of the country is expected during the forecast period.

GEFS Week-2 Exceedance Prob. > 200mm
Valid: 20201029 - 20201104

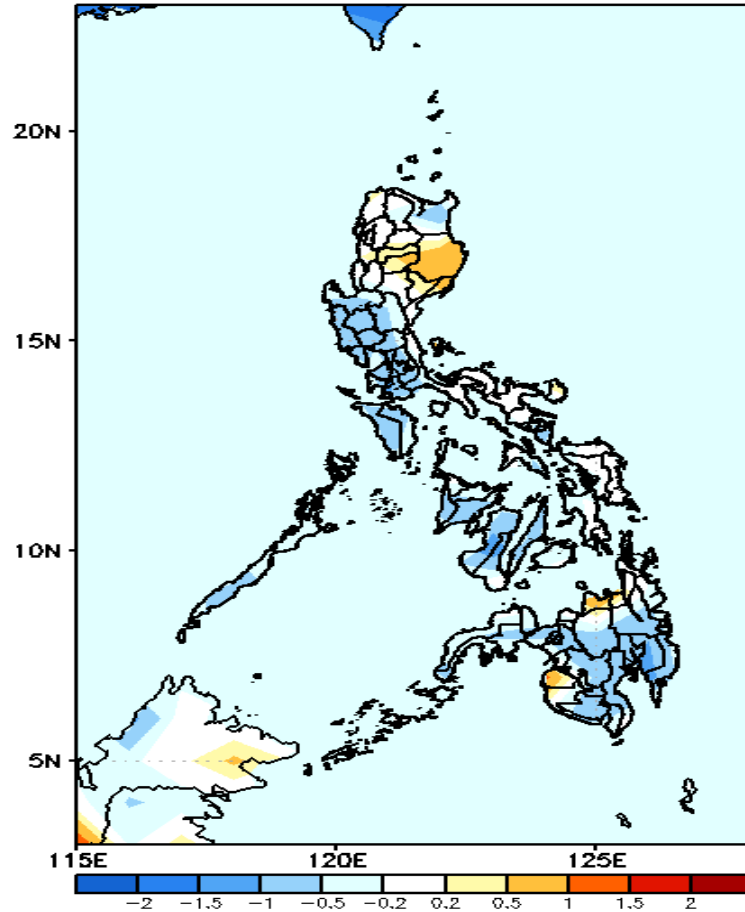


Less probability of rainfall to exceed 200mm in most parts of the country is expected during the forecast period.



GEFS Week-1 & 2 Forecasts: T2m Anomaly

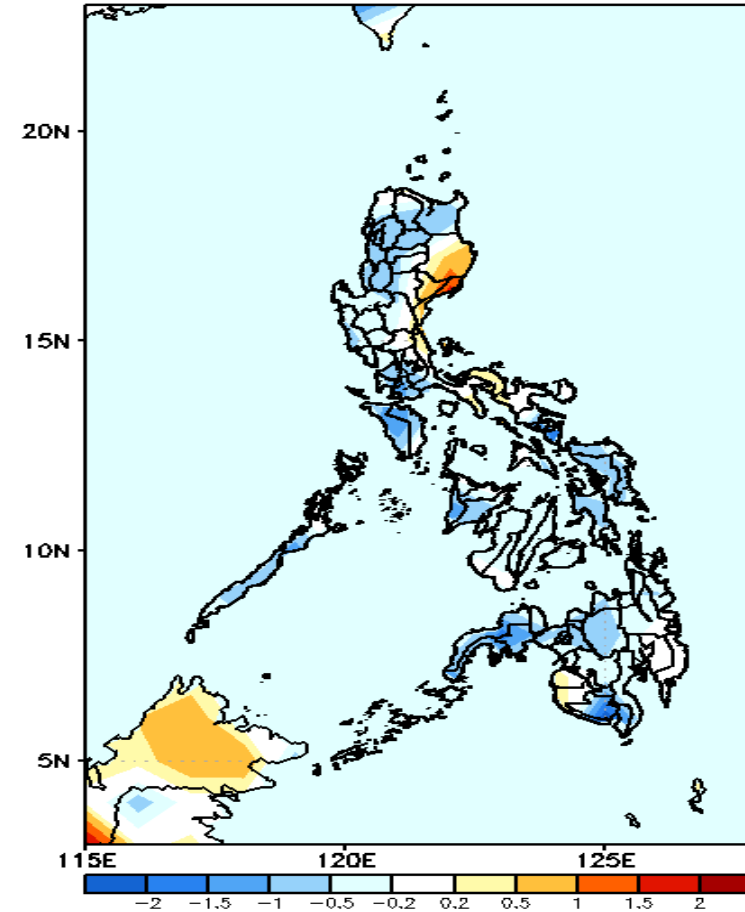
GEFS Week-1 T2m Anomaly
Valid: 20201022 - 20201028



2m Temperature Week 1: October 22-28, 2020

Slightly cooler to cooler than average surface air temperature in most parts of the country is expected except in Isabela, Misamis Oriental and Sultan Kudarat where slightly warmer temperature will likely experience.

GEFS Week-2 T2m Anomaly
Valid: 20201029 - 20201104



2m Temperature Week 2: Oct 29-Nov 04, 2020

Slightly cooler to cooler than average surface air temperature in most parts of the country is expected except in Isabela, Aurora and Quirino where slightly warmer temperature will likely experience.